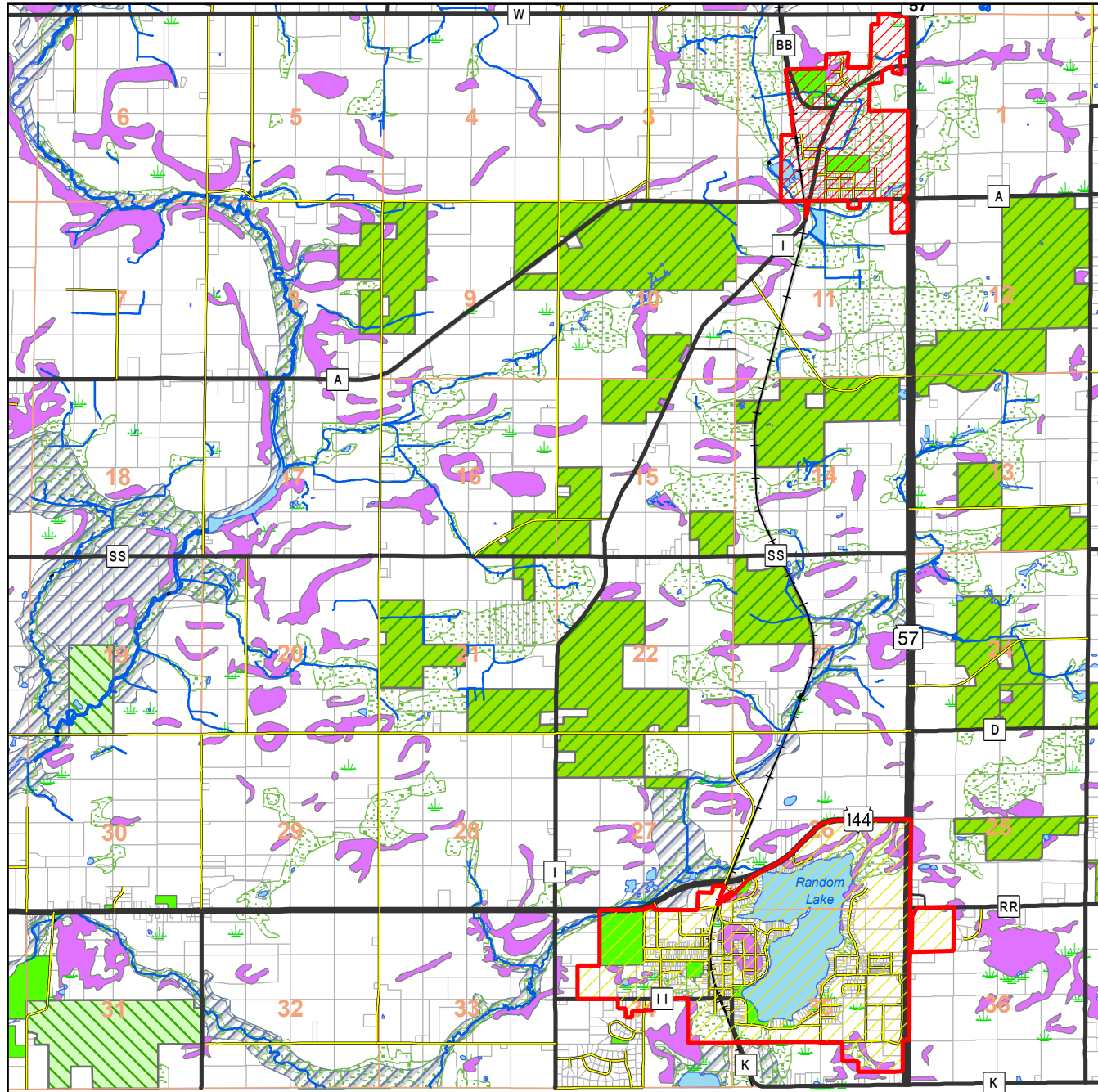


Figure 8.5



Development Constraints Town of Sherman

Sheboygan County, WI

Legend

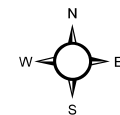
- Publicly Owned Lands
- Lands Leased by DNR
- Lands under DNR Conservation Easement
- Areas of 12% or greater Slope
- DNR Wetlands
- DNR Wetlands < 2 Ac
- Approximate 100 Year Floodplain
- Village of Adell
- Village of Random Lake

Roads

- State Hwy
- County Road
- Local Road
- Private Road

Planimetric

- Bridges
- Dams
- Railroads
- Rivers, Streams
- Road / Bridge
- Section Lines
- Lakes
- Parcels



1" equals 4,700'

4,750 2,375 0 4,750 Feet